

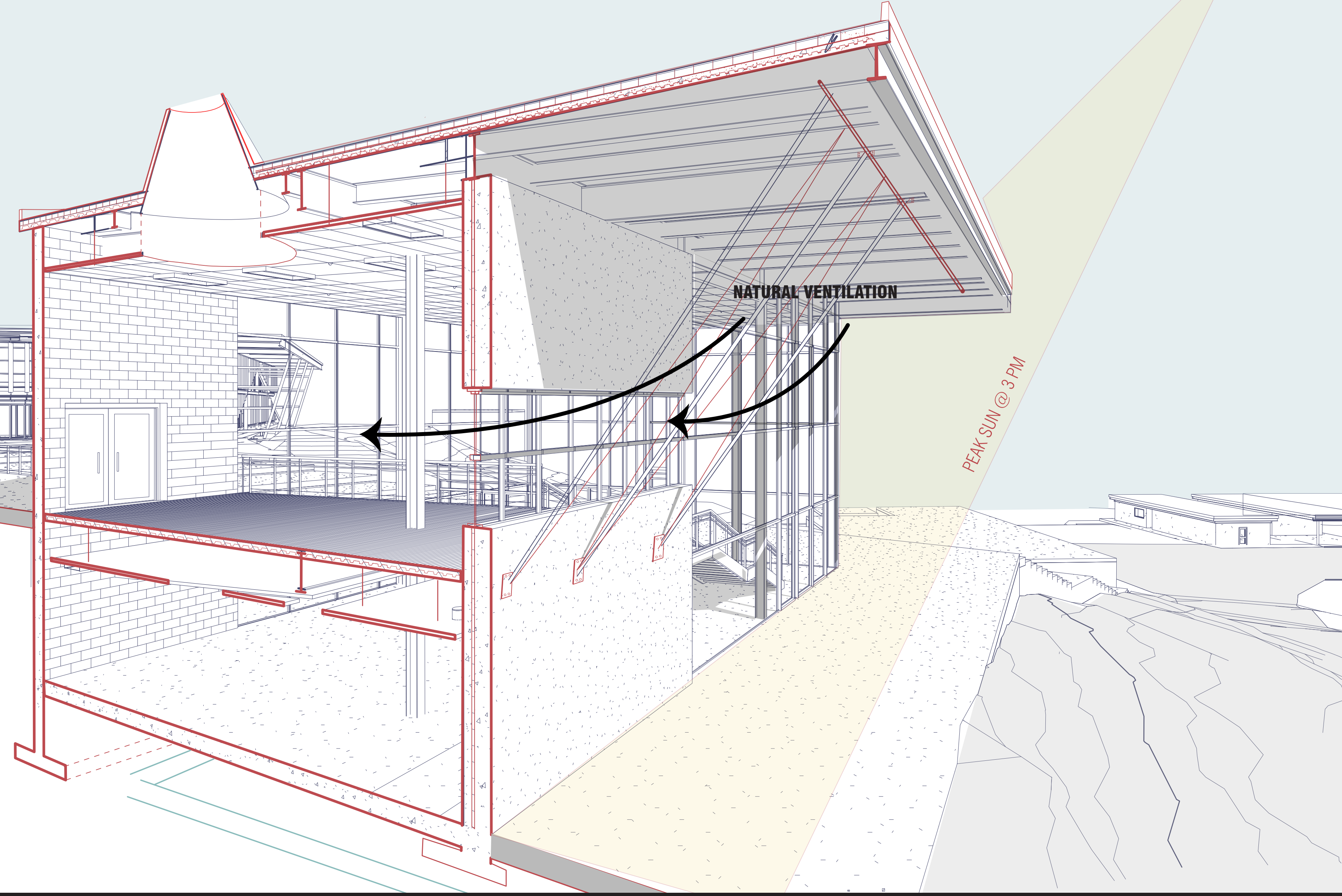
SECOND FLOOR PLANS

THE INTENTION OF THE SIMPLICITY OF THE FLOOR PLANS IS TO ALLOW FOR FLEXIBILITY OF USE BETWEEN THE EXHIBIT LEVEL AND THE BREAK LEVEL.

THE TERRACE ACCESSIBLE FROM THE INTERIOR BREAKSPACE ALLOWS THE USER TO MOVE FREELY ACROSS THE SITE FROM INTERIOR TO EXTERIOR.

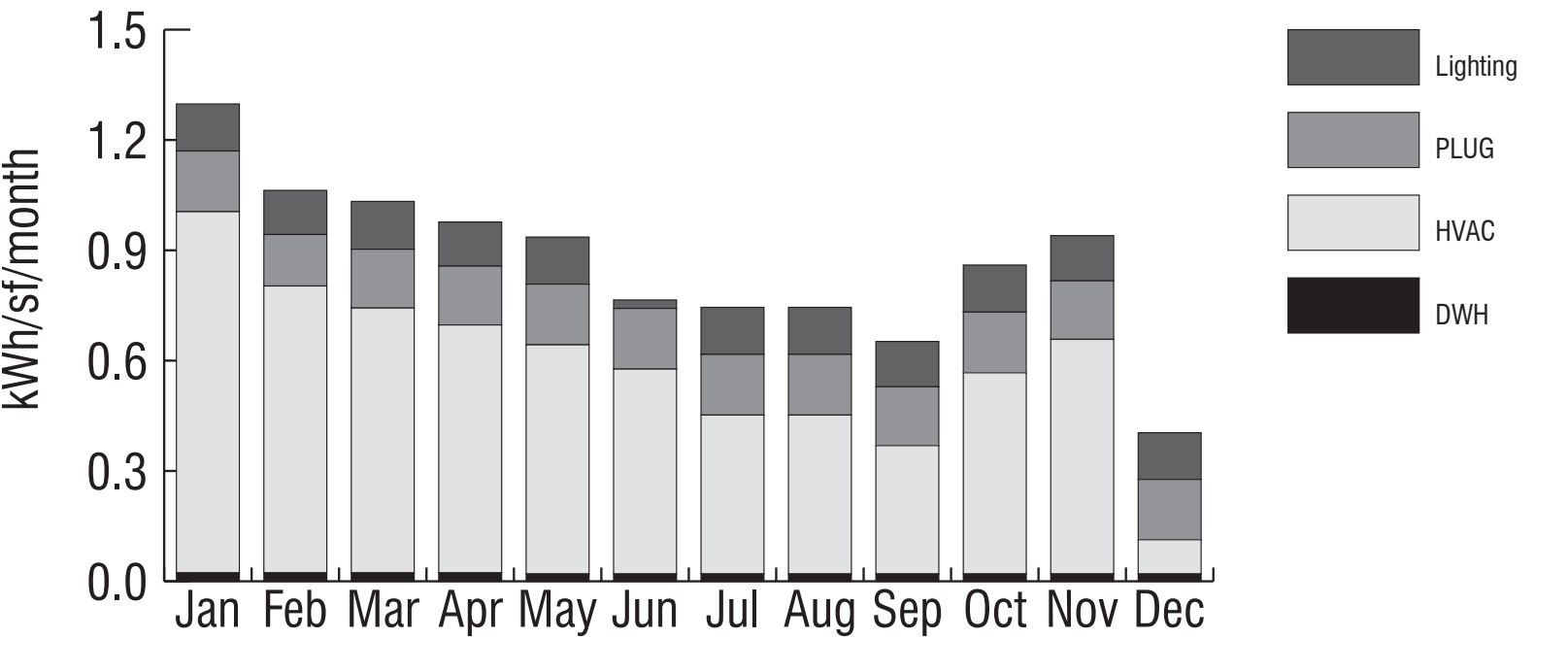


CONCEPT When first analyzing the site, the best strategy was to take advantage of the mild weather and continuous sunlight and to create a form of transparency within the project. A blurred line between the interior and exterior as well as contrast between heaviness and lightness of material with the use of curtain wall systems and skylights have cultivated a design that takes advantage of not only daylighting but the magnificent views of the bay. Thus, allowing the occupants to feel a connection to the exterior world. The necessity to create connections to the environment was also very important because this unique site is characterized by elevation and terrain changes that are celebrated within the site plan. The building layout celebrates existing and proposed relationships on site.



THE IMMERSIVE FACADE THE EASTERN FACADE OF THE IMMERSIVE CENTER FEATURES SYSTEM THAT INCLUDES (1) CURTAIN WALL GLAZING, (2) A VERTICAL LOUVER SYSTEM, AND (3) A CANTILEVERED ROOF TO CREATE A COVERED GATHERING SPACE. ALLOWING ALL THREE OF THESE SYSTEMS TO WORK TOGETHER ALLOWS FOR INCREASED ENERGY EFFICIENCY SHIELDING THE FACADE FROM SUNLIGHT WHILE OPTIMIZING DAYLIGHTING ON THE INTERIOR.

TOTAL MONTHLY END USE CONSUMPTION



	Calculated Energy Use (kBtu/sf/year)
HVAC	6.8
Lighting	1.4
Appliances and Plug Loads	3.4
Domestic Hot Water	0.28
Total Building Consumption	11.9 kBtu/sf/year
Total Exhibit Consumption	2 kBtu/sf/year
Gross EUI	24.9 kBtu/sf/year
Renewable Production	30.71 kBtu/sf/year
Net EUI	-5.83 kBtu/sf/year

